

COMPANY PROFILE

2017

لينك لايت لاعمال الكهرباء (ذ.م.م)

LINK LIGHT

ELECTRICAL WORKS LLC

Solution for the bright side

Location: Dubai, UAE - P.O Box: 86521
Tel: +971-4-2675071
Fax: +971-4-2675081
Email: info@linklightuae.com
Web: www.linklightuae.com



--Table of Contents--

Introduction.....	3
Our Mission	4
Our Vision.....	4
Our core values	5
The workforce behind LLE.....	6
Our Services.....	7
Switchgear Integration.....	16
Equipment & Tools.....	17
Stores & Materials handling facilities	18
Health & Safety Policy	28
ISO Certificate	30
Contact Us.....	31

Introduction

We are pleased to introduce ourselves as a **DEWA approved Electrical contractor** registered in Dubai since 1994. The company has achieved accreditation for its Quality Management System in accordance with the **ISO 9001:2015** standard. Our principal activity is Electrical & DRRG Solar PV Contracting and we provide services in all areas of electrical works; domestic, commercial, and industrial installations and maintenance.

At Link Light, we have built our business around understanding our customers' needs & expectations, in order to deliver quality electrical solutions which perform and protect each and every time. Our no compromise approach to our work shows in the finished product. From commercial and retail fit-outs to residential buildings and industries, each project is treated the same. Experienced project managers, qualified electricians and office based support staff ensures that your contract is completed successfully. We owe our success to our customers who have patronized our services with confidence and trust. We believe strongly in providing quality service on time and within budget while maintaining safety and cooperating with those involved. An emphasis on Quality Control and Customer Service ensures that a large portion of our work comes from a number of clients who come back to use our services time and time again. And most of our new contacts approach us as a result of personal recommendations.

Please find attached documentation details pertaining to the execution of various jobs in the past few years.

Yours truly

Sasi E.K

(Managing-Director)

--Our Mission--

Our mission is to establish long-term, mutually rewarding relationships with each of our valued clients by consistently surpassing their expectations and gaining their trust through exemplary and dedicated performance by every member of the LLE Team.



--Our Vision--

To be the region's most professional and respected commercial electrical contractor/ electrical service provider. We understand that our clients appreciate the focus on preventative & proactive maintenance and the resulting peace of mind that comes from working with us.

Our Word is Our Promise

--Our core values--

We cherish five core values:

Customer Focus

We concentrate our efforts towards a better and long term relation with our clients, and ensure to build a trust-based relationship with them.

Service

We strive to ensure excellent service in all what we do and we do it with honesty, integrity and professionalism.

Competitive

LLE operates a competitive business offering customers an electrical installation at a price that can assure customer satisfaction while still providing a reasonable profit from operations for LLE.

Teamwork

We value collaboration and team contribution, encourage creativity, initiatives and new solutions, and align to the utmost result exceeding success.

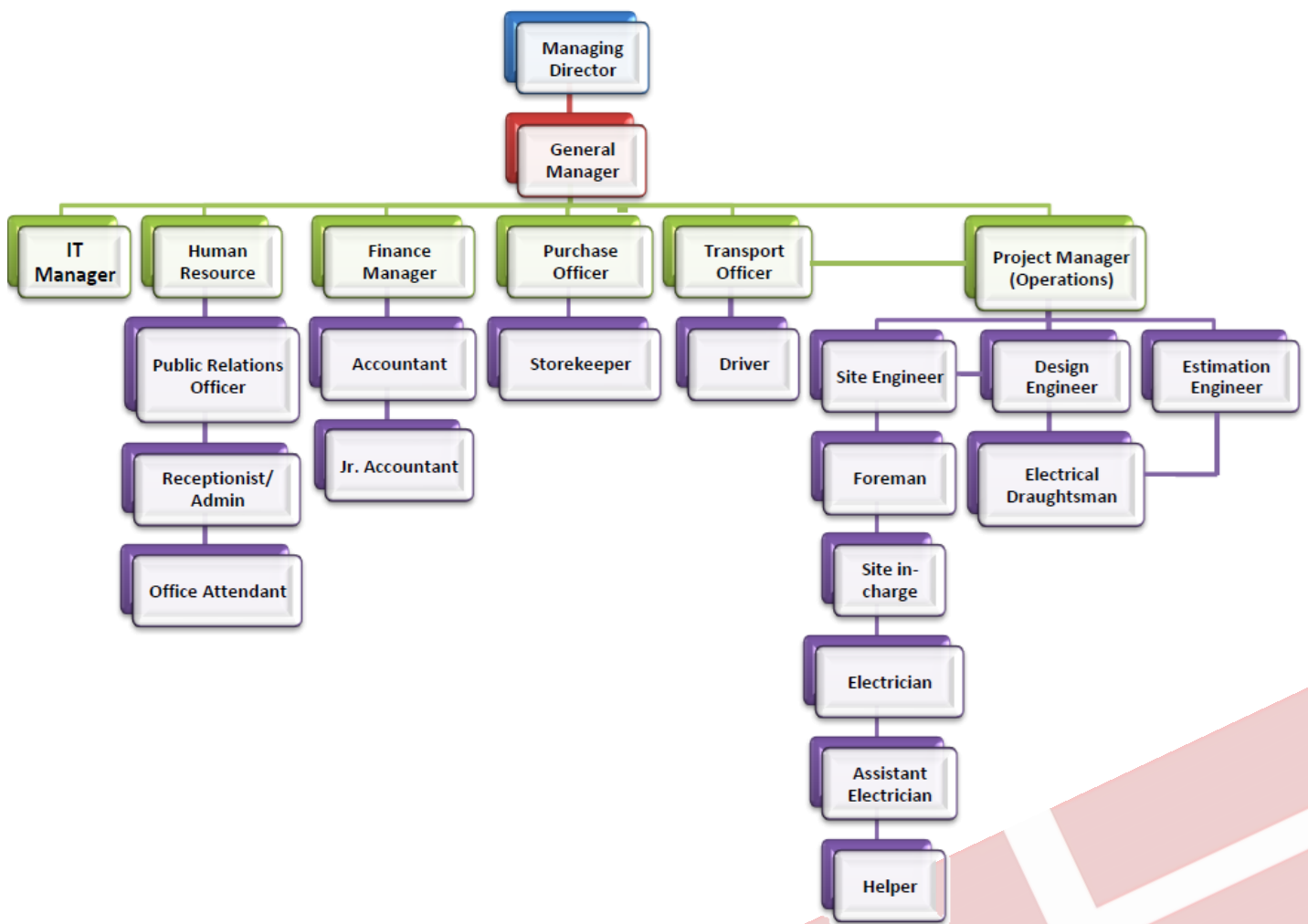
Commitment

We are monitoring every project thoroughly from beginning to end. We are having energy to ignite others to perform. Our team makes sure that we are treating our colleagues, customers, suppliers, and community with integrity, respect and empathy.

LLE's future depends on repeat business. Consequently, we approach each job with the intention that it is the beginning of a long relationship with a new customer. By emphasizing responsiveness, dependable service and integrity we are able to provide cost-effective value whether on a service call or working on a turnkey project.

--The workforce behind LLE--

Our team brings together many specialists to solve your electrical needs. Their integrated technical knowledge and field experience provide you with a total electrical service during budgeting, design and construction throughout the life of your operation. That service goal characterizes all aspects of LLE including a commitment to providing superior electrical construction at a reasonable cost.



-- Our Services --

LLE is involved in most electrical aspects of commercial and industrial installations as well as residential developments. You can always count on us to do the job right. Because of our growth and success, we are able to provide a comprehensive list of electrical services. No job is too small for LLE. We strive to make sure all our jobs are done efficiently and safely.

COMMERCIAL CUSTOMERS

Our involvement in this sector is a major part of our business. We can cover anything from complete turnkey installations, to alterations and maintenance.

INDUSTRIAL SERVICES

For our industrial customers we recognize the special requirements necessary to work in an Industrial Plant environment. We can assist with upgrading plant systems, emergency repairs and plant maintenance.

WE ARE TYPICALLY INVOLVED WITH INSTALLATIONS IN THE FOLLOWING TYPES OF PREMISES:-

- ▣ Residential Villas
- ▣ Offices / Fit out works
- ▣ Factories and Warehouses
- ▣ Show Rooms Retail Premises
- ▣ Residential and Commercial Buildings
- ▣ Construction supply



ELECTRICAL WORKS, STRUCTURED CABLING & FIRE ALARM @ 2B+G+M+3Typ+HC @ AL GARHOUD





CABLE LAYING WORKS FOR INTERNATIONAL CAP @ JAFZA





ELECTRICAL WORKS @ IFA CLUBHOUSE-PALM JUMEIRAH



AIZONE RETAIL UNIT @ MIRDIFF CITY CENTRE



ELECTRICAL WORKS @ PATCHI FACTORY DUBAI INDUSTRIAL CITY





ELECTRICAL WORKS @ G+1 VILLA – NAD AL SHEBA



ELECTRICAL WORKS @ METALOCK INSITU MACHINING MIDDLE EAST LLC, DUBAI MARITIME CITY



ELECTRICAL WORKS @ 2B+G+9 BUILDING @ MUHAISANAH FOURTH



ELECTRICAL WORKS @ 2B+G+14+GYM BUILDING @ AL BARSHA FIRST



B+G+6+GYM+ROOF BUILDING @ AL WARQA 1

OUR INVOLVEMENT ENCOMPASSES ALL ASPECTS OF INSTALLATIONS SUCH AS:-

- ▣ Complete Electrical Design & Installation works
- ▣ L.V Switchgear Assembly and Installation
- ▣ Power upgrade in compliance with DEWA regulations.
- ▣ Design/Drafting Services
- ▣ Mains Cabling
- ▣ Power Distribution - Installation and Maintenance
- ▣ Interior & Exterior Lighting - Installation and Maintenance
- ▣ Lighting Dimming Control – Installation and Maintenance
- ▣ Power Factor Correction
- ▣ Earthing Systems
- ▣ Data/Voice Cabling works
- ▣ Uninterruptible Power Systems

-- Switchgear Integration—

The designing of switchboards are done in-house by our professional team of engineers from **Link Light Switchgear Industries LLC** (sister company). Our panels are custom built to client specification and conform to international standards, thereby enabling us to be as flexible as possible and maintain successful and productive customer relationships.

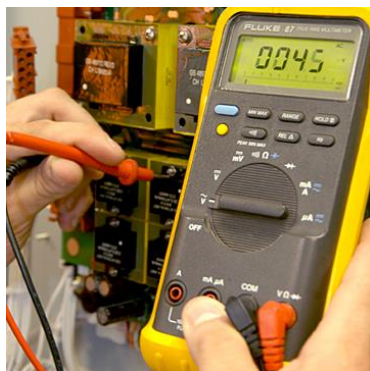
- Main Distribution boards upto 4000A (Form:2,3,4)
- Sub-main Distribution boards (Form:1 & 2)
- Synchronizing panel up to 4000A
- Motor control centres (Form:1,2,3,4)
- Lighting Control panel
- Small and Final Distribution boards
- DOL, Star-Delta, VFD, Soft starter, Auto-Transformer Panels
- Capacitor bank With & Without Harmonic Filters
- Metering Cabinets as per DEWA regulations
- Isolator panels

The main motive of Link Light Switchgear Industries LLC is to ensure customer satisfaction by providing premium quality panels with a full warranty for maximum performance. The assembled components are acquired from top range manufacturers. Moreover a qualified team of specialists ascertain a prompt and excellent after sales service when required. This includes any future upgrades, replacements and modifications. The offices of the key component manufacturers are situated in the UAE which further assures the technical and service backup and training.

-- Equipment & Tools--

We possess a comprehensive and wide range of reliable tools and equipment to perform our duties.

- ▣ Cable and conductor cutting and splicing tools
- ▣ Hydraulic crimping tools
- ▣ Electric and Gas welding Equipment and tools
- ▣ Cable rollers and hydraulic cable jacks
- ▣ Scaffolding
- ▣ Wide range of reliable hand-tools like jack-hammer, drilling m/c etc.
- ▣ Temporary power supplies for off-site work
- ▣ Wide range of reliable hand-tools
- ▣ Safety equipment and tools
- ▣ Low voltage test equipment and tools
- ▣ Equipment and tools for LV cable jointing and testing
- ▣ Transportation vehicles for material and equipment
- ▣ Earth Resistance testers and drilling tools for electrical earth pits.



-- Stores & Materials handling facilities --

Secure and orderly stores and store procedures are part of our infrastructure.

Procurement procedures are smooth, fluid and well managed.



--Summary of Buildings and Factory Project--

PROJECT	CLIENT	CONSULTANT
WEAVING MILLS POWER UPGRADATION 1500 KVA	CAROLINA FABRICS	FREELINE ENGG. CONSULTANT
SPINNING MILLS 2x2500 KVA	CAROLINA FABRICS	ORION ENGINEERING
BROYLER HOUSE	EMIRATES MODERN POULTRY FARM	AL HASHMI ENGG. CONSULTANT
BATCHING PLANT @ ALQUZ	UNIMIX	--
2B+G+3TYP.FLOOR BUILDING- SATWA.	SIDDIQ AL HADI ALAJMANI	AL MAKTAB AL ASRI
PRINTING PRESS – AL QUOZ IND. AREA	DELTA GROUP	--

PROJECT	CLIENT	CONSULTANT
AL – QUOZ MAIN FABRICATION YARD	SPECIALIST SERVICES	--
FURNITURE FACTORY @ DIP	EBENISTES DESIGN	TEAM 90
G+1 RESIDENTIAL VILLAS 12# IN MIRDIFF	SIDDIQUE ABDUL HADI AL AJMANI	RIMAL CONSULTANTS
NESTLE FACTORY @ TECHNOPARK(SUB-CONTRACTOR OF SIEMENS)	NESTLE	PAX-KENT INTL.
G+M SHED # 8 BLOCK A @ JEBEL ALI	BRANDSCAPE ADVERTISING	--
G+M+1 BLDG @ SOUQ AL KABEER	SIDDIQUE ABDUL HADI AL AJMANI	NEXT ENGINEERING CONSULTANTS
CAFETERIA & OFFICE BLOCK @ JAFZA	MARS G.C.C	BLUEHAUS

PROJECT	CLIENT	CONSULTANT
2B+G+14 BUILDING @ AL BARSHA	SIDDIQUE ABDUL HADI AL AJMANI	AL ASRI ENGG. CONSULTANT
G+1 STOREY LUXURY VILLA @ NAD AL SHEBA	SHEIKHA RAEESA BIN OBAID JUMA AL MAKTOUM	ELITE COSULTING ENGG.
G+M SHED # 7 BLOCK -A @ JEBEL ALI	LAVORA BOOK BINDING	--
CYAN ADVERTISING INDUSTRIES@ D.I.P	SEVEN SEAS GROUP	--
ASTIC INSULATION INDUSTRY @ D.I.P	ASTIC INDUSTRIES	--
OFFICE BLOCK FOR POULTRY FARM	EMIRATES MODERN POULTRY FARM	AMCON ENGINEERING AND ARCHITECHTURAL CONSULTANTS
2B+G+M+3Typ.+Hc (HOTEL+HOTEL APARTMENT+ COMMERCIAL) BLDG.	CENTRAL CONTRACTING	ENG. ADNAN SAFFARINI

PROJECT	CLIENT	CONSULTANT
2B+G+9+GYM. COMM./RES. BUILDING	CENTRAL CONTRACTING	NEXT ENGG. CONSULTANT
EATON FACTORY @ TECHNOPARK	DESIGN INFINITY	--
PATCHI FACTORY @ DUBAI INDUSTRIAL CITY	IMPACT ANGLE CONTRACTING	--
B+G+6+GYM.+ROOF COMM./RES. BUILDING	CENTRAL CONTRACTING	RIMAL CONSULTANT
POWER UPGRADATION FOR EMIRATES MODERN POULTRY FARM (1 NO 1000Kva TRANSFORMER)	EMPCO	--
BATCHING PLANT FOR UNIMIX (2 No's 2500A TRANSFORMER)	UNIMIX	--
LIFE PHARMA FZE @ JEBEL ALI	LIFE PHARMA	AL GAFRI CONSULTING ARCHITECTS

-Our fit out projects-

PROJECT	CLIENT	CONSULTANT
COMGUARD OFFICE @ JLT	PINNACLE INTERIORS	--
GMC CLINIC @ TECOM TAMEEM HOUSE	GMC CLINIC	PINNACLE INTERIORS
LITTLEWOODS ELC @ GELLERIES LIMITLESS BUILDING	LITTLEWOODS EARLY LEARNING CENTRE	GREENCURVE INTERIORS
SOLAS MARINE, ELECTRICAL FIT OUT WORKS 3 FULL FLOORS@ SHOBA IVORY	DESIGN INFINITY	DESIGN CONCEPTS
BO CONCEPTS SHOWROOM @ SHK ZAYED ROAD	VERTICAL SPACE	--
VFS SAUDI MOFA @ WAFI MALL	KASHTI INTERIORS	--

PROJECT	CLIENT	CONSULTANT
SSH DESIGN OFFICE @ DESIGN DISTRICT 3	PINNACLE	--
RAWAA SALOON@ARABIAN CENTRE MALL	IMPACT ANGLE CONTRACTING	--
DUBAI PETROLEUM & DUBAI SUPPLY AUTHORITY OFFICES	GEMACO INTERIORS	--
IFF OFFICES @ DUBIOTECH	GEMACO INTERIORS	--
VFS GLOBAL OFFICE @ WAFI MALL	KASHTI INTERIORS	--
FIT OUT WORKS- 2ND FLOOR @ DEYAAR BLDG, AL BARSHA	HQ CREATIVE	PINNACLE INTERIORS
DUBAI WORLD TRADE CENTRE, PODIUM 1,2&3	DUBAI WORLD TRADE CENTRE	DESIGN INFINITY
MEDICAL FITNESS CENTER, DHCC	MFC	PINNACLE INTERIORS

PROJECT	CLIENT	CONSULTANT
MAERSK TRAINING @ DUBAI WORLD CENTRAL.	MAERSK LINE	X WORKS
SERCO OFFICE (19 th & 20 th FLOOR)@ ROLEX TOWER	DESIGN INFINITY	--
DUBAI PETROLEUM (DPE)	DUBAI PETROLEUM	PINNACLE
ROBERTO CAVALI @ MALL OF EMIRATES	IMPACT ANGLE CONTRACTING	--
RIMAL SALOON @ MALL OF EMIRATES	IMPACT ANGLE CONTRACTING	--
TARA JARMAN @ DUBAI MALL	IMPACT ANGLE CONTRACTING	--
DAMCO 5 th & 6 th FLOOR @ MOOSA TOWER	DAMCO	PINNACLE
WAREHOUSE 1&4 @ RAS AL KHOR	MASTER PRINTING PRESS	--

PROJECT	CLIENT	CONSULTANT
DODSAL ENGINEERING AND CONSTRUCTION PTE. LIMITED @ UBORA TOWER	EVOLVE INTERIOR	--
WASEL 1&2 @ DUBAI WORLD TRADE CENTRE.	DESIGN INFINITY	--
INVESTMENT CORPORATION OF DUBAI (ICD) @ DIFC	XWORKS	--
SRL DIAGNOSTICS @ AL RAZI BUILDING – DHCC (BLOCK A & E)	PINNACLE	--
CEDAR WHITE BRADLEY CONSULTING @ BURJ AL SALAM TOWER, DUBAI	PINNACLE	--
RMJM FZ-LLC @ DUBAI DESIGN DISTRICT (BUILDING-4)	XWORKS	--
CRACKNELL @ DUBAI DESIGN DISTRICT (BUILDING-6)	XWORKS	--

PROJECT	CLIENT	CONSULTANT
PANDORA @ MARINA PLAZA	XWORKS	--
BULL & ROO INVESTMENTS LLC @ BURJ AL SALAM TOWER	XWORKS	--
PRIME MEDICAL CENTRE @ AL HEBIAH FIRST, MOTOR CITY, ON GOING PROJECT.	PINNACLE	-
PRIME MEDICAL CETER @ GRAND MALL AJMAN , ON GOING PROJECT.	PINNACLE	-
CANON MIDDLE EAST @ DUBAI INTERNET CITY, ON GOING PROJECT	XWORKS	-

-Health & Safety Policy-

Our employees are of paramount importance.

LLE recognizes that the talent and energy of all its employees are its most valuable assets.

Their safety and health demands the same degree of attention and emphasis as that placed on our mainstream activity which encompasses quality, proficiency, and efficiency, environmental and financial awareness. We also recognize our responsibilities for the health and safety of others that may be affected by our activities. It is our aim to achieve a working environment, which is free of work-related accidents and ill health, and to this end we will pursue continuous improvements from year to year.

LLE recognizes the importance of a safe work environment through the following:

Identifying hazards in the work place, assessing the risks related to them and implementing appropriate preventive and protective measures

Providing and maintaining safe plant and work equipment

Establishing and enforcing safe methods of work

Ensuring that tasks given to employees are within their skills, knowledge and the ability to perform

Ensuring that technical competence is maintained through the provision of refresher training as appropriate

Promoting awareness of Health and Safety and of good practice through the effective communication of the relevant information

Furnishing the resources needed to meet these objectives

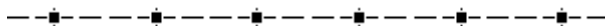
All employees on their part are encouraged to contribute actively towards achieving a work environment, which is free of accidents and ill health. All employees are issued with all relevant personal protective equipment and this is recorded in a register. Seminars and lectures are held regularly to discuss the correct use of personal protective equipment, as well as other aspects of safety.

LLE demands all site employees have current training/testing in the necessary First Aid/C.P.R., Hilti and hearing tests. Job Foremen ensure all new employees to a site are fully trained on the tools involved and acquainted with on-site safety and reporting procedures.

The company provides, at no cost to the employee, specialized safety equipment, such as hard hats, safety glasses, hearing protection, safety gloves, fall protection equipment, respirators and high voltage safety gear.

Our Health and Safety Policy will be reviewed annually to monitor its effectiveness and to ensure that it reflects changing needs and circumstances.

The Best Protection is Prevention





--Contact Us--

Link Light Electrical Works L.L.C.



P.O. Box 86521
Al Qusais Industrial Area-4, Dubai, U.A.E
Phone +971-4-2675071
Fax +971-4-2675081
E-mail: info@linklightuae.com, lledubai@eim.ae
www.linklightuae.com

We undertake all kinds of electrical installation works

----- ▪ COMMERCIAL ▪ RESIDENTIAL ▪ INDUSTRIAL ▪ -----

* * *